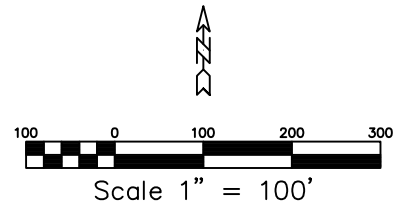
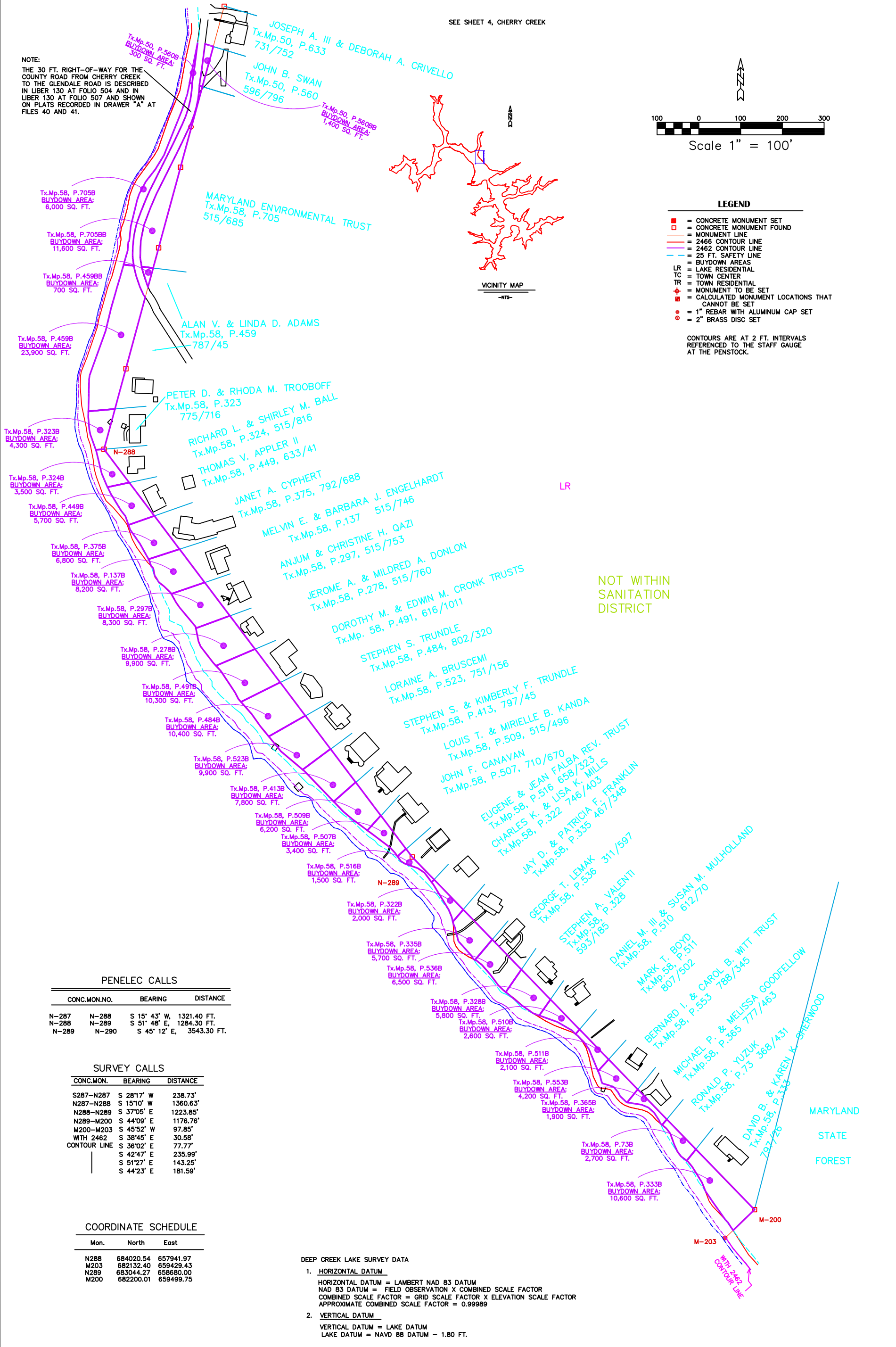
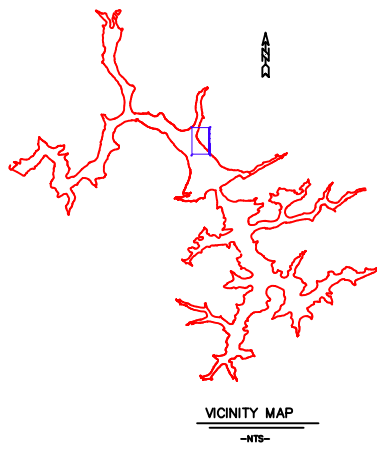


SEE SHEET 4, CHERRY CREEK

NOTE:
THE 30 FT. RIGHT-OF-WAY FOR THE COUNTY ROAD FROM CHERRY CREEK TO THE GLENDALE ROAD IS DESCRIBED IN LIBER 130 AT FOLIO 504 AND IN LIBER 130 AT FOLIO 507 AND SHOWN ON PLATS RECORDED IN DRAWER "A" AT FILES 40 AND 41.



- LEGEND**
- = CONCRETE MONUMENT SET
 - = CONCRETE MONUMENT FOUND
 - = MONUMENT LINE
 - = 2466 CONTOUR LINE
 - = 2462 CONTOUR LINE
 - = 25 FT. SAFETY LINE
 - = BUYDOWN AREAS
 - LR = LAKE RESIDENTIAL
 - TC = TOWN CENTER
 - TR = TOWN RESIDENTIAL
 - ⊕ = MONUMENT TO BE SET
 - ⊕ = CALCULATED MONUMENT LOCATIONS THAT CANNOT BE SET
 - = 1" REBAR WITH ALUMINUM CAP SET
 - = 2" BRASS DISC SET
- CONTOURS ARE AT 2 FT. INTERVALS REFERENCED TO THE STAFF GAUGE AT THE PENSTOCK.



NOT WITHIN SANITATION DISTRICT

PENELEC CALLS

CONC.MON.NO.	BEARING	DISTANCE
N-287	N-288	S 15° 43' W, 1321.40 FT.
N-288	N-289	S 51° 48' E, 1284.30 FT.
N-289	N-290	S 45° 12' E, 3543.30 FT.

SURVEY CALLS

CONC.MON.	BEARING	DISTANCE
S287-N287	S 28°17' W	238.73'
N287-N288	S 15°10' W	1360.63'
N288-N289	S 37°05' E	1223.85'
N289-M200	S 44°09' E	1176.76'
M200-M203	S 45°52' W	97.85'
WITH 2462	S 38°45' E	30.58'
CONTOUR LINE	S 36°02' E	77.77'
	S 42°47' E	235.99'
	S 51°27' E	143.25'
	S 44°23' E	181.59'

COORDINATE SCHEDULE

Mon.	North	East
N288	684020.54	657941.97
M203	682132.40	659429.43
N289	685044.27	658680.00
M200	682200.01	659499.75

DEEP CREEK LAKE SURVEY DATA

- HORIZONTAL DATUM**
HORIZONTAL DATUM = LAMBERT NAD 83 DATUM
NAD 83 DATUM = FIELD OBSERVATION X COMBINED SCALE FACTOR
COMBINED SCALE FACTOR = GRID SCALE FACTOR X ELEVATION SCALE FACTOR
APPROXIMATE COMBINED SCALE FACTOR = 0.99989
- VERTICAL DATUM**
VERTICAL DATUM = LAKE DATUM
LAKE DATUM = NAVD 88 DATUM - 1.80 FT.

SEE SHEET 1, STATE PARK COVE

© COPYRIGHT - 2000 BY MORGAN C. FRANCE, L.S., P.E. ALL RIGHTS RESERVED

SHEET NO. 7
 DRAWING 7, CHERRY CREEK COVE
 PROJECT DEEP CREEK PROJECT BUYDOWN SURVEY
 Prepared By: MORGAN C. FRANCE, L.S., P.E.
 10 North Third Street
 Oakland, Maryland 21550
 (301) 334-2305
 Prepared For: REAL ESTATE SERVICES - REAL ESTATE
 DEPT. OF MARYLAND
 300 West Preston Street, Room 601
 Baltimore, Maryland 21201
 Area Ext. 9/00
 REVISIONS 10/20/00
 DRAWN BY: SUSAN N. EVANS PERANDI
 APPROVED BY: MORGAN C. FRANCE
 and MARGARET A. JORDAN
 PLOT NO. CHRY7
 Plot date: 6/26/00 at 3:05
 123\C\DATA\EP\PROJECTS\DC\2000\CHRY7